

Furukawa Hybrid Cable Series

for 4K and HD solutions



FURUKAWA ELECTRIC INDUSTRIAL CABLE

HDTV Optical Cables delivering Quality, Performance and Reliability.

Why 90% Of Japanese Broadcasting Stations Rely On Our Optical Cables:

Proven Reliability With Furukawa

Consistent Performance Under The Most Extreme Conditions

Custom Designs To Suit Applications

Low Smoke Zero Halogen (Infrastructure) & Double-Jacket
(Studio Floor)

Furukawa Accessories

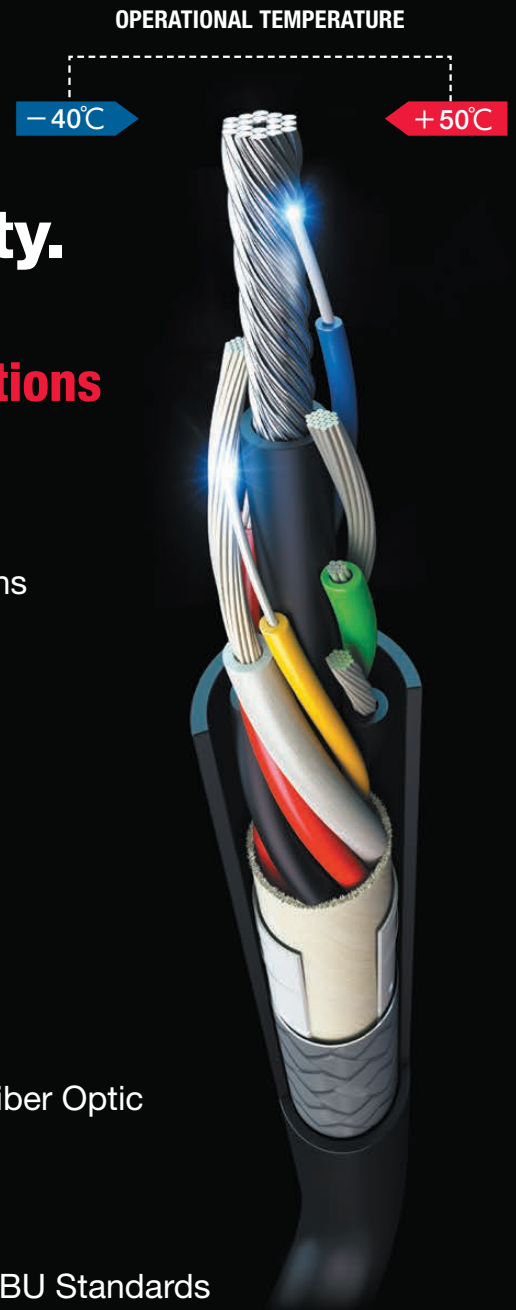
Cable Checker / Integrated Wall Rack / Junction Boxes /
FITEL Fusion Splicers and Cleavers

Tough And Durable

Fusion Splicers And Accessories For Field Termination Of Fiber Optic
Cables

International Standards

Furukawa Cable Is Compliant With SMPTE 311M, ARIB & EBU Standards



Representative product of Furukawa hybrid cable series for 4K and HD solutions.
We have a wide range of products available. Please get in touch with us to discuss your requirements.

Optical Composite Cable for 4K and HD solutions

Movable Cable

For Fixed Installation

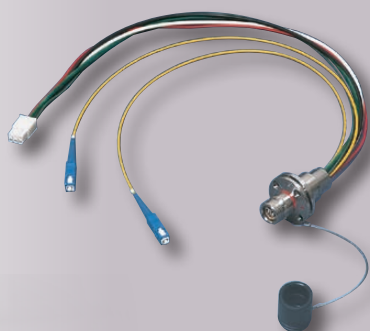
TV-OM-AMS

P. 4

TV-SM-LSZH

P. 4

Accessories



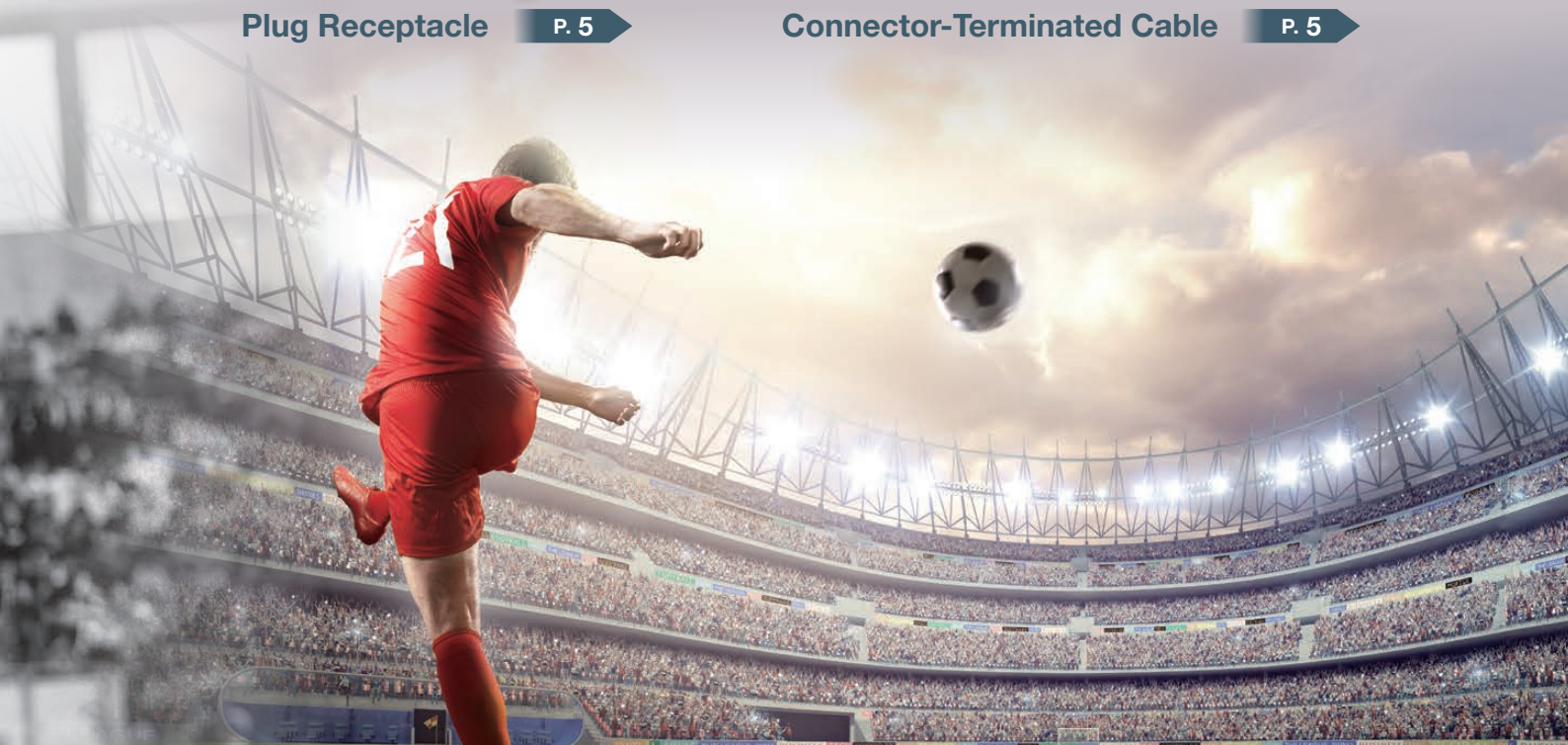
Plug Receptacle

P. 5

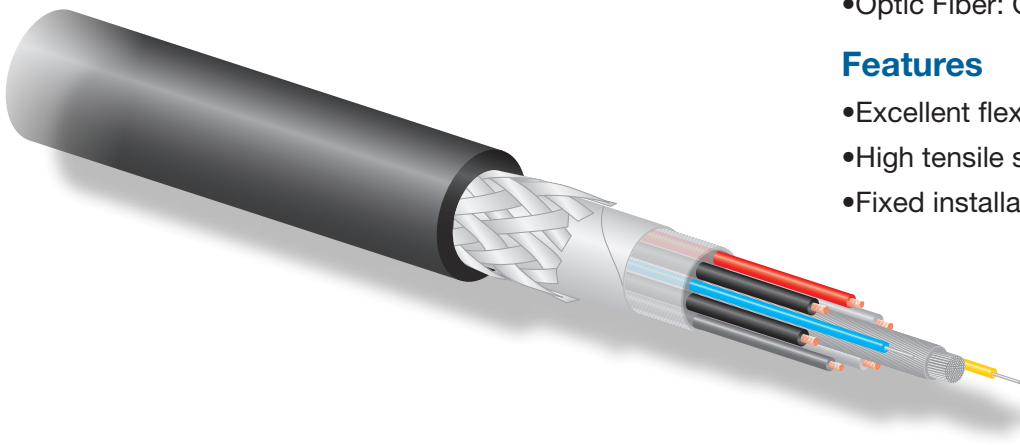
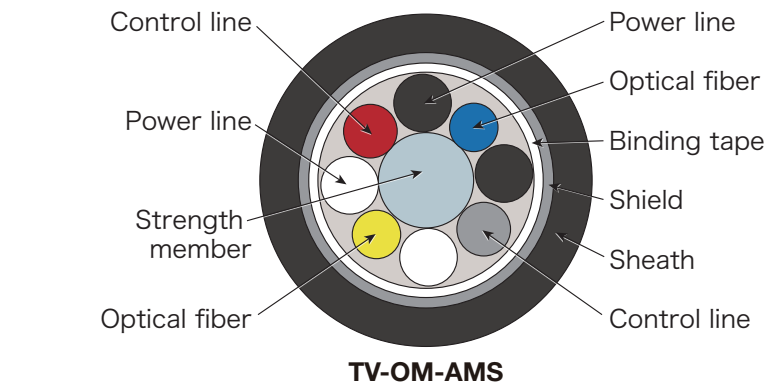


Connector-Terminated Cable

P. 5



Movable Cable TV-OM-AMS



Applications

- For movable application / Camera side, OB Van, Patch cable
- High Definition Television (HDTV)

Norms / Approvals

- SMPTE 311-2009 Standard

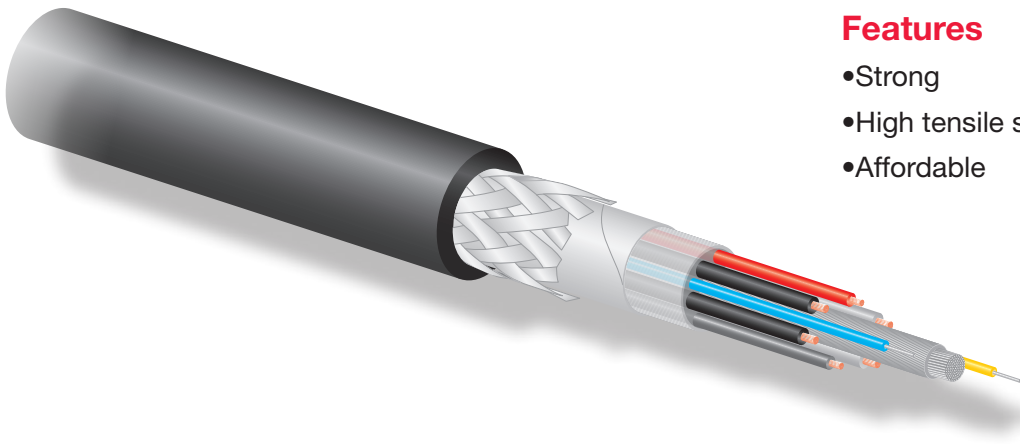
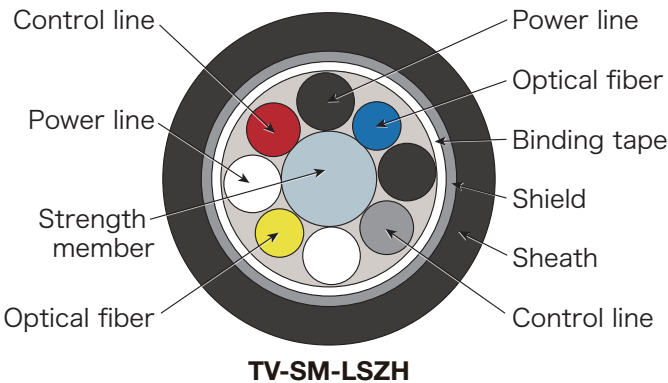
Options

- Outer Jacket: Abrasion-resistant sheath
- Optic Fiber: G652.B

Features

- Excellent flexing and twisting capability
- High tensile strength
- Fixed installation possible

For Fixed Installation TV-SM-LSZH



Applications

- For fixed installation
- High Definition Television (HDTV)

Norms / Approvals

- SMPTE 311-2009 Standard

Options

- Outer Jacket: PUR/LSZH
- Optic Fiber: G657.A2

Features

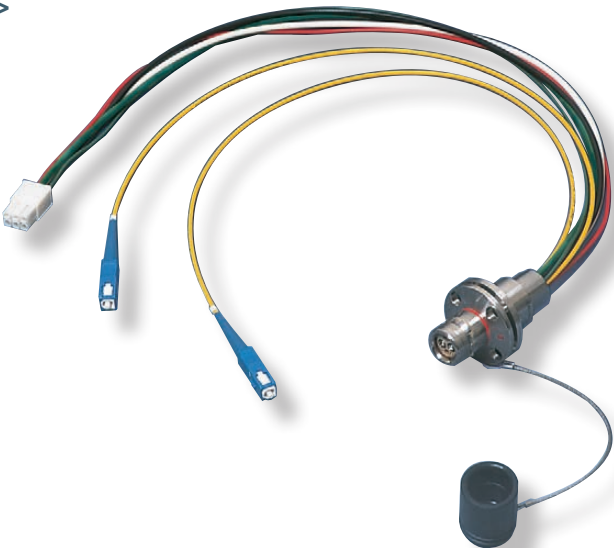
- Strong
- High tensile strength
- Affordable

Plug Receptacle

3K series (ARIB and SMPTE standards)

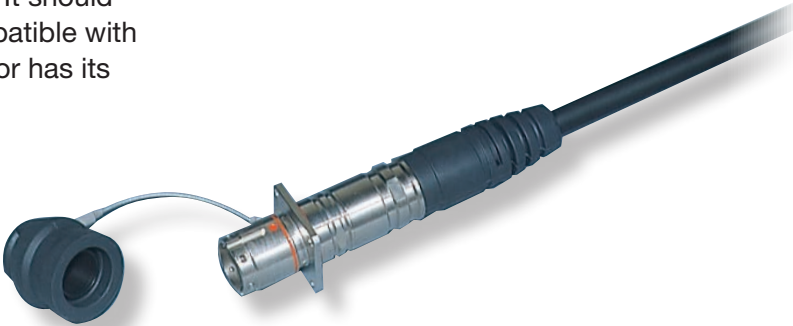
<Type: FXW-SUS/##/****>

These connectors are to be placed on the base station side of the cable seen from the camera head. It should be noted that every series of connectors are not compatible with each other. Receptacle and plug connectors mate with each other as a pair.



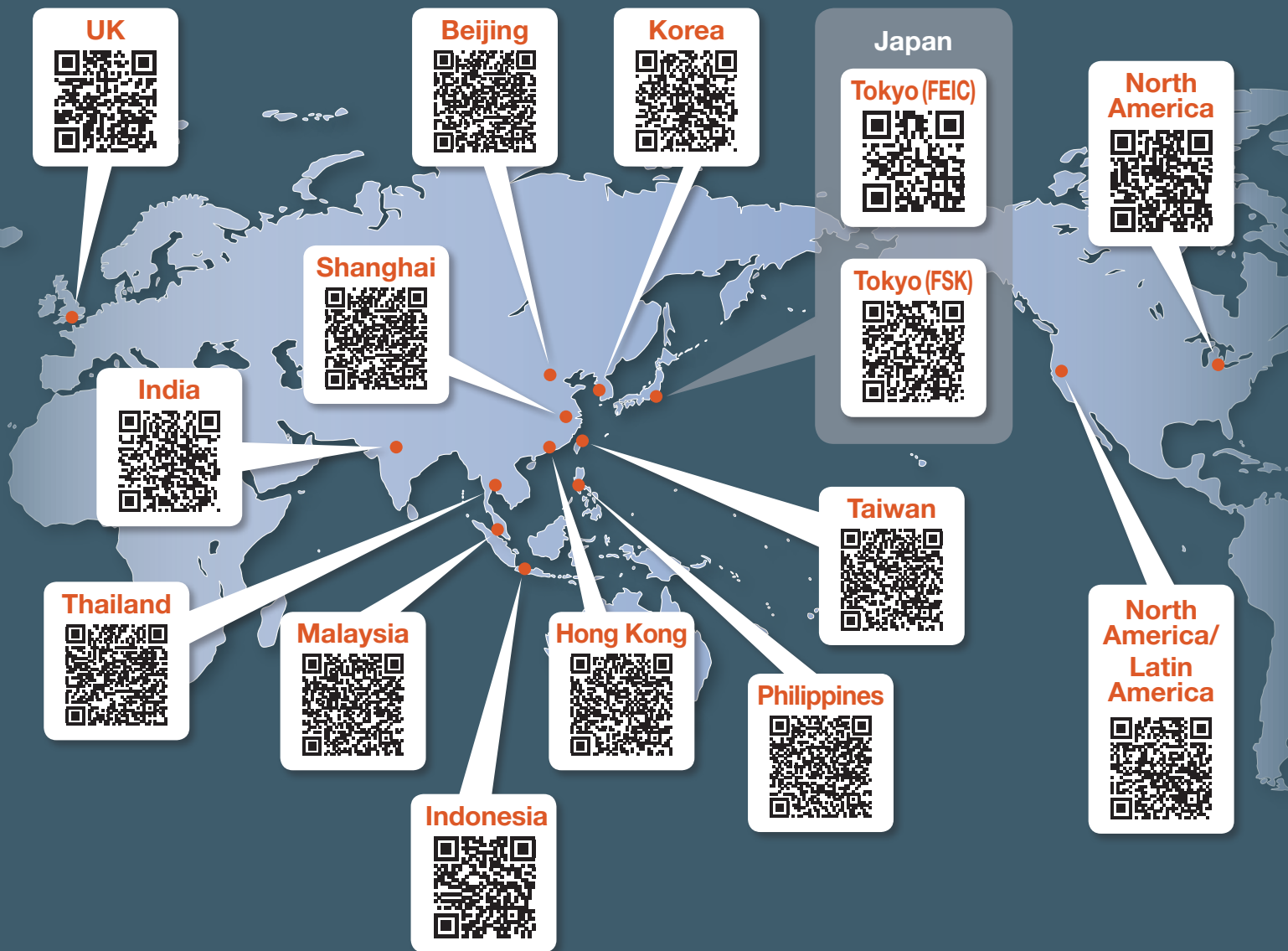
Connector-Terminated Cable

This cable assembly connects power lines, control lines, and optical fibers. It should be noted that they are not compatible with each other, since each connector has its own attachable cables.



Worldwide Sales and Assembly

Furukawa official retailer



* Please understand that contents of this catalog may change without notice.

* Company and product names appearing in this publication are registered trademarks or trademarks of respective companies.